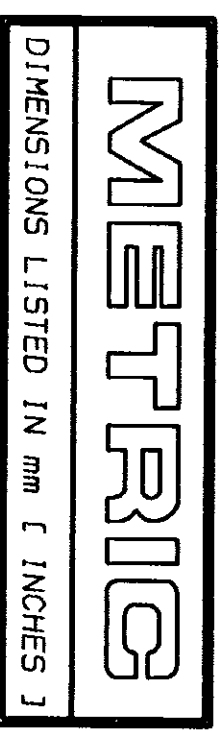
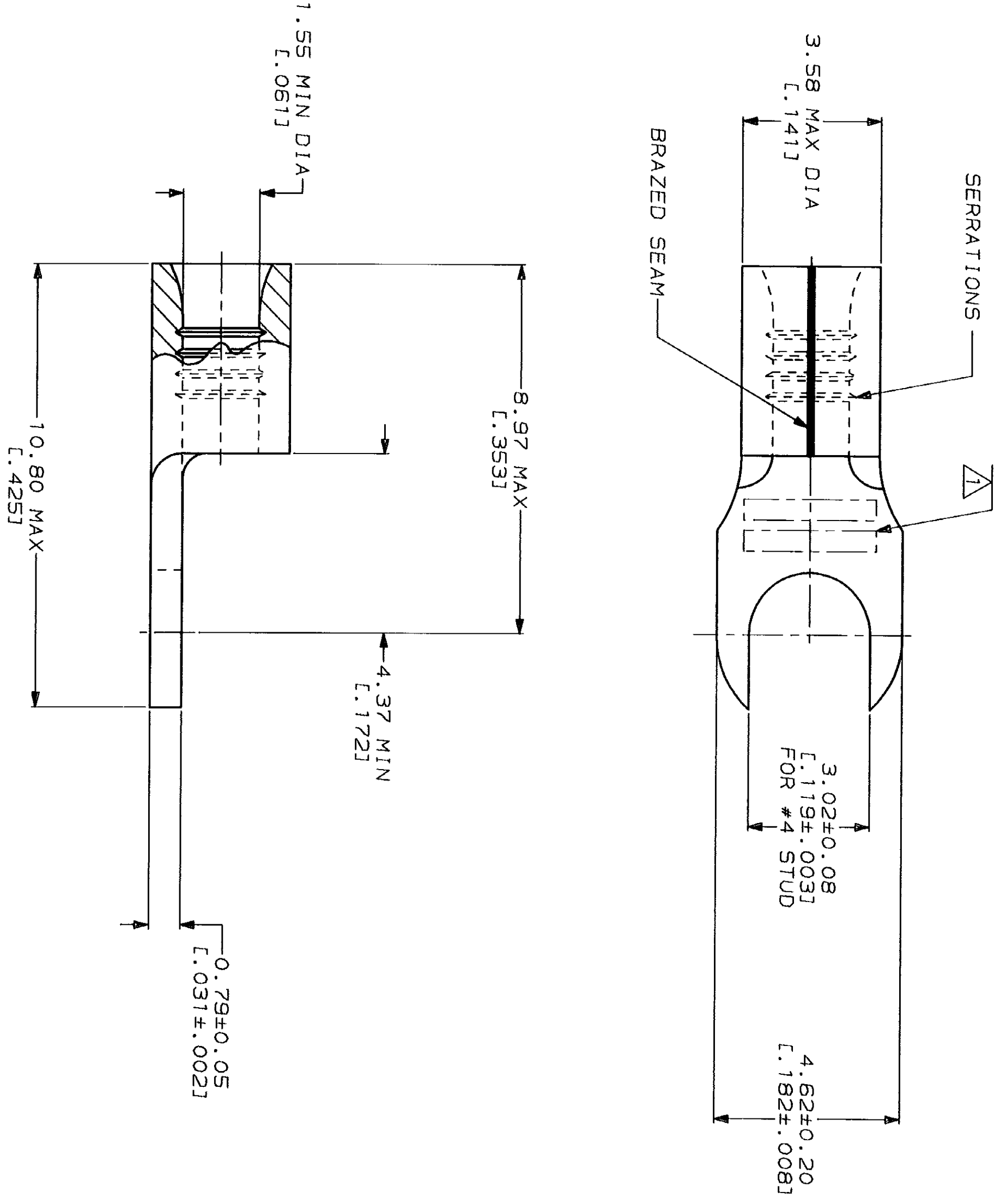


LOC	DIST	P	F	ZONE	LTR	REVISIONS	DESCRIPTION	DATE	APPD
G	14					D	REV, RDRW, & SM PKG PER 0720-0040-93	4-8-93	18 DAP



AMP WIRE RANGE	UL E13288 Listed
22-16 AWG SOLID OR STRANDED	22-16 AWG SOLID OR STRANDED
LR7189 Certified	MILITARY P/N AND CLASS
22-16 AWG SOLID OR STRANDED	NOT APPLICABLE

STAMP AMP 22-18* APPROX AS SHOWN
 22-16 TERMINALS ARE STAMPED 22-18 IN
 ACCORDANCE WITH MILITARY SPECIFICATION
 MIL-T-7928, COMMERCIAL WIRE RANGE IS 22-16



100	LOOSE PIECE, BOX	8-321288-1
---	LOOSE PIECE	321288

AMP
 AMP Incorporated
 Harrisburg, PA 17105-3508

TERMINAL, SLOTTED
 RING TONGUE, SOLISTRAND™

AMP INCORPORATED CUSTOMER SERVICE SYSTEMS		MAX RECOMMENDED OPERATING TEMPERATURE: 170°C MAX
FOR ADDITIONAL PRODUCT INFORMATION OR COPIES OF DRAWINGS AND TECHNICAL DOCUMENTS	PRODUCT INFORMATION CENTER 1-800-522-6752	VOLTAGE RATING: NOT APPLICABLE
FOR APPLICATION TOOLING INFORMATION	TOOLING ASSISTANCE CENTER 1-800-722-1111	WIPE CROSS SECTIONAL AREA RANGE: 0.26-1.65mm² [509-3,260] CIR MILS SOLID OR STRANDED
FOR ORDER ENTRY	1-800-526-5142	THIS DRAWING IS A CONTROLLED DOCUMENT FOR AMP AND THE CONTROLLING ENGINEERING ORGANIZATION SHOULD BE CONTACTED FOR THE LATEST REVISION.

DO NOT SCALE PRINT. UNLESS SPECIFIED DIMENSIONS IN mm FINISHES TOLERANCES ON:	DR 4-8-93 TA BRINKMAN
2 PLC DEC ±	CHK 4-8-93 DA PATTERSON
3 PLC DEC ±	APPD 4-8-93 DE MILLER
ANGLES	APPD 4-8-93 JL HECKLEY
MATERIAL	PRODUCT SPEC
COPPER PER ASTM B-152 ANNEALED	APPLICATION SPEC
FINISH TIN PLATE	WEIGHT
0.00254 [L.000100] MIN THK PER MIL-T-10727	

NAME	AMP
SIZE	CAGE CODE 00779 DRAWING NO C-321288
SCALE	10:1 SHEET 1 OF 1